

CAPACITIES APPLY TO OPERATION ON FIRM LEVEL SURFACE										
LOAD RADIUS FEET	MAIN BOOM OR EXTENSION CAPACITIES IN POUNDS									
	360° ROTATION				OVER FRONT					
	ON RUBBER		ON OUTRIGGERS		ON RUBBER		ON OUTRIGGERS			
MAIN BOOM	4	7000	8500	7200	9000					
	5	5000	7000	6000	7000					
	6	3700	5850	5300	5850					
	8	2300	4150	4150	4150					
	10	1450	3400	3200	3400					
	12	1050	2850	2400	2850					
	14	900	2350	1900	2450					
	16	750	1900	1600	2150					
	18	650	1600	1300	1950					
	19	600	1450	1150	1850					
8' BOOM EXTENSION	20	550	1450	1150	1600					
	22	450	1250	1000	1450					
	24	400	1050	850	1300					
	26	350	850	750	1150					
	27	300	750	650	1100					
	BOOM EXTENSION	8-FOOT BOOM EXTENSION - STRAIGHT OR OFFSET								
		ANGLE	MAIN BOOM ANGLE							
			0°	10°	20°	30°	40°	50°	60°	70°
			+ * 0°	1100	1200	1300	1450	1600	1850	2300
	* 15°		—	—	1100	1250	1350	1500	1700	2050
* 30°	—	—	—	1100	1200	1300	1450	1600		

+ USE 0° FOR STRAIGHT BOOM EXTENSION \* USE 0°, 15° or 30° FOR OFFSET BOOM EXTENSION

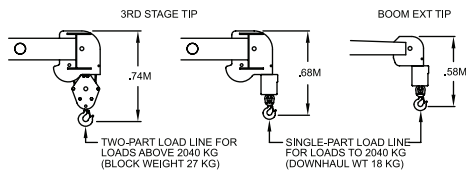
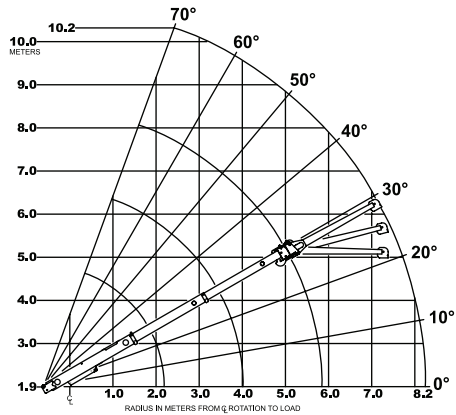
LOAD RADIUS IS THE HORIZONTAL DISTANCE FROM THE CENTER OF ROTATION OF THE UNLOADED CRANE TO THE VERTICAL LOAD LINE WITH THE LOAD APPLIED.

EXCEEDING CAPACITY RATINGS OR APPLYING SIDE LOADS TO THE BOOM OR BOOM EXTENSION IS MISUSE, HAZARDOUS, AND VOIDS WARRANTY.

**CAUTION:** BOOM EXTENSION LOADS MUST NOT EXCEED MAIN BOOM CAPACITY. DO NOT PICK AND CARRY WITH LOADS ON BOOM EXTENSION.

CAPACITIES ON OUTRIGGERS ARE 85% OF TIPPING LOADS. CAPCITIES ON RUBBER ARE 75% OF TIPPING LOADS. CAPACITIES BELOW BOLD LINE ARE LIMITED BY TIPPING. OTHER CAPACITIES ARE LIMITED BY STRUCTURAL OR HYDRAULIC CAPABILITY. MAXIMUM HYDRAULIC PRESSURE: 2600 PSI

## Load Chart Metric



CAPACITIES APPLY TO OPERATION ON FIRM LEVEL SURFACE									
LOAD RADIUS METERS	MAIN BOOM OR EXTENSION CAPACITIES IN KILOGRAMS								
	360° ROTATION				OVER FRONT				
	ON RUBBER	ON OUTRIGGERS	ON RUBBER	ON OUTRIGGERS	ON RUBBER	ON OUTRIGGERS	ON RUBBER	ON OUTRIGGERS	
MAIN BOOM	1.2	3170	3850	3260	4080				
	1.5	2320	3220	2750	3220				
	2.0	1450	2390	2250	2400				
	2.5	990	1830	1830	1830				
	3.0	680	1560	1480	1560				
	3.5	500	1350	1170	1350				
	4.0	430	1160	940	1180				
	4.5	380	980	810	1050				
	5.0	330	830	700	960				
	5.8	270	660	520	840				
2.44M BOOM EXTENSION	6.0	260	660	520	750				
	6.5	220	600	480	680				
	7.0	190	520	420	620				
	7.5	170	450	370	570				
	8.2	130	340	290	500				
	BOOM EXTENSION	2.44M BOOM EXTENSION - STRAIGHT OR OFFSET							
		MAIN BOOM ANGLE							
	ANGLE	0°	10°	20°	30°	40°	50°	60°	70°
	+* 0°	500	540	590	660	720	840	1040	1590
	* 15°	—	—	500	560	610	680	770	930
* 30°	—	—	—	500	540	590	660	720	

+ USE 0° FOR STRAIGHT BOOM EXTENSION \* USE 0°, 15° or 30° FOR OFFSET BOOM EXTENSION

LOAD RADIUS IS THE HORIZONTAL DISTANCE FROM THE CENTER OF ROTATION OF THE UNLOADED CRANE TO THE VERTICAL LOAD LINE WITH THE LOAD APPLIED.

EXCEEDING CAPACITY RATINGS OR APPLYING SIDE LOADS TO THE BOOM OR BOOM EXTENSION IS MISUSE, HAZARDOUS, AND VOIDS WARRANTY.

**CAUTION:** BOOM EXTENSION LOADS MUST NOT EXCEED MAIN BOOM CAPACITY. DO NOT PICK AND CARRY WITH LOADS ON BOOM EXTENSION.

CAPACITIES ON OUTRIGGERS ARE 85% OF TIPPING LOADS. CAPACITIES ON RUBBER ARE 75% OF TIPPING LOADS. CAPACITIES BELOW BOLD LINE ARE LIMITED BY TIPPING. OTHER CAPACITIES ARE LIMITED BY STRUCTURAL OR HYDRAULIC CAPABILITY. MAXIMUM HYDRAULIC PRESSURE: 2600 PSI