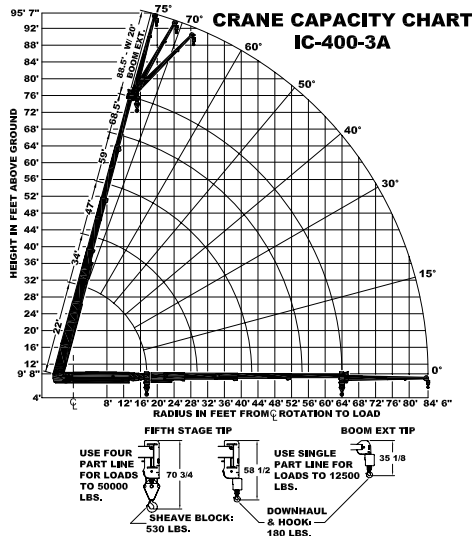


Load Chart US Standard



In & Down 360 capacities apply when operating over the sides or rear with beams at less than full extension.

For boom lengths between columns, use the next longer boom length column. For load radii between rows, use the next longest load radius row.

Load radius is the horizontal distance from the center of rotation of the unloaded crane to the vertical load line with load applied.

CAPACITIES IN POUNDS FOR OPERATION ON FIRM LEVEL SURFACE													
LOAD RADIUS FEET	ON OUTRIGGERS										ON RUBBER		LOAD RADIUS FEET
	OUT & DOWN 360° ROTATION OR IN & DOWN OVER FRONT					IN & DOWN 360° ROTATION					FRONT	360°	
	BOOM RETRACTED 22' BOOM	2ND STAGE OUT- 34' BOOM	47' BOOM	59' BOOM	FULLY EXTENDED 68.5' BOOM	BOOM RETRACTED 22' BOOM	2ND STAGE OUT- 34' BOOM	47' BOOM	59' BOOM	FULLY EXTENDED 68.5' BOOM	ANY BOOM	ANY BOOM	
8	50000	36000	36000			42000	36000	36000			24400	17000	8
10	42000	36000	35200	34400		27900	26700	26600	28300		20300	13200	10
12	36000	36000	31900	28100		20300	19300	19300	20600		17200	10500	12
14	35100	34100	28600	26200	21900	15700	14800	14700	15900	16000	14700	8500	14
16	30100	29100	25200	22900	19600	12500	11600	11600	12700	12900	12700	6900	16
18	23600	23600	22300	20800	17800	10100	9300	9300	10400	10600	11100	5600	18
20	4700	21100	20500	19300	16000		7500	7500	8400	8800	9400	4600	20
22	4400	19000	18600	17900	14600		6000	6000	6900	7400	7900	3700	22
24	4000	17100	17100	16300	13500		4900	4900	5800	6300	6600	3000	24
26	3700	15300	15400	14400	12300		3900	3900	4900	5300	5600	2300	26
28	3400	13300	13300	13300	11300		3100	3100	4100	4600	4800	1800	28
30	3200	11700	11700	12200	10400		2500	2500	3400	3900	4100	1300	30
32	3000	4000	10500	11200	9600			2000	2800	3300	3600	1100	32
36	2800	3600	8500	9100	8200			1400	1900	2300	2800	700	36
40		3200	7200	7400	7100			900	1200	1600	2200	—	40
42		3000	6700	6800	6700			700	900	1300	2000	—	42
44		2900	3700	6200	6200			700	1100	1100	1800	—	44
48		2700	3400	5400	5300			—	700	1400	—	—	48
52			3100	4700	4600			—	—	1100	—	—	52
54			3000	4400	4200			—	—	1000	—	—	54
56			2900	4400	3900			—	—	900	—	—	56
60			2800	4100	3500			—	—	—	—	—	60
64				3600	3000			—	—	—	—	—	64
68				3200	3000								
72				2800	2800								
76					2400								
80					2100								
84					1900								
BOOM EXT. OFFSET ANGLE	20' BOOM EXTENSION STRUCTURAL CAPACITIES												
	MAIN BOOM ANGLE												
0°	2600	2750	3000	3400	4100	5100	6200	7000					
15°	—	2500	2600	2700	2900	3300	4300	4800					
30°	—	—	2300	2400	2500	2700	3200	3400					

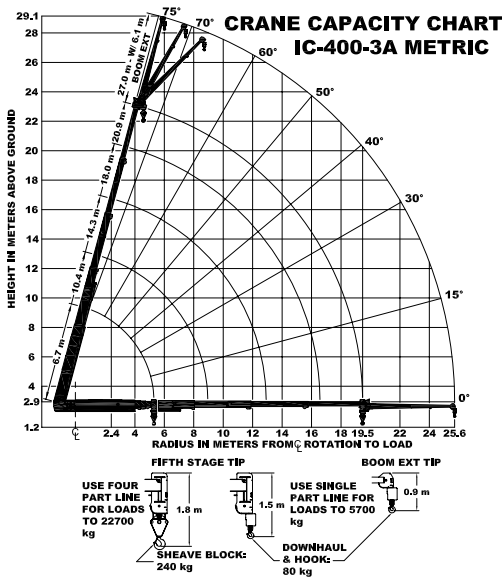
CAPACITIES ON OUTRIGGERS ARE 85% OF TIPPING LOADS. CAPACITIES ON RUBBER ARE 75% OF TIPPING LOADS. CAPACITIES BELOW BOLD LINE ARE LIMITED BY TIPPING. OTHER CAPACITIES ARE LIMITED BY STRUCTURAL OR HYDRAULIC CAPABILITY.

HYDRAULIC FUNCTIONS OPERATE AT MID-RANGE SPEED ON RUBBER OR IF CRANE IS NOT LEVEL.

BOOM EXTENSION MAY NOT LIFT LOADS ON RUBBER.

CAUTION: BOOM EXTENSION LOADS MUST NOT EXCEED MAIN BOOM CAPACITY. LOAD RADII BELOW DOUBLE LINES REQUIRE BOOM EXTENSION. DO NOT POSITION BOOM AT LOAD RADII WHERE "—" CAPACITIES ARE SHOWN. EXCEEDING CAPACITY RATINGS OR APPLYING SIDE LOADS TO THE BOOM OR BOOM EXTENSION IS MISUSE, HAZARDOUS, AND VOIDS WARRANTY.

Load Chart Metric



In & Down 360 capacities apply when operating over the sides or rear with beams at less than full extension.

For boom lengths between columns, use the next longer boom length column. For load radii between rows, use the next longest load radius row.

Load radius is the horizontal distance from the center of rotation of the unloaded crane to the vertical load line with load applied.

CAPACITIES IN KILOGRAMS FOR OPERATION ON FIRM LEVEL SURFACE													
LOAD RADIUS METERS	ON OUTRIGGERS										ON RUBBER		LOAD RADIUS METERS
	OUT & DOWN 360° ROTATION OR IN & DOWN OVER FRONT					IN & DOWN 360° ROTATION					FRONT	360°	
	BOOM RETRACTED 6.7 m BOOM	2ND STAGE OUT- 10.4 m BOOM	14.3 m BOOM	18.0 m BOOM	FULLY EXTENDED 20.9 m BOOM	BOOM RETRACTED 6.7 m BOOM	2ND STAGE OUT- 10.4 m BOOM	14.3 m BOOM	18.0 m BOOM	FULLY EXTENDED 20.9 m BOOM	ANY BOOM	ANY BOOM	
2.4	22700	16300	16300			19000	16300	16300			11000	7700	2.4
3.0	19300	16300	16000	15600		12900	12400	12300	12800		9300	6100	3.0
3.5	16900	16300	14800	13200		10000	9600	9500	9900		8100	5000	3.5
4.0	16100	15900	13600	12200	9900	7900	7500	7400	8100	7200	7100	4200	4.0
4.5	15100	14600	12400	11300	9500	6500	6100	6000	6600	6700	6300	3500	4.5
5.0	13100	12700	11100	10100	8700	5400	5000	5000	5500	5600	5600	3000	5.0
5.5	10500	10600	10100	9400	8000	4600	4200	4200	4700	4800	5000	2500	5.5
6.0	2100	9700	9400	8800	7400		3500	3500	3900	4100	4400	2100	6.0
7.0	1900	8200	8100	7700	6300		2400	2400	2800	3100	3300	1500	7.0
8.0	1600	6800	6800	6400	5500		1700	1700	2100	2400	2500	1000	8.0
9.0	1500	5400	5400	5600	4800		1200	1200	1600	1800	1900	600	9.0
10.0	1300	1700	4500	4900	4200			800	1100	1400	1500	400	10.0
11.0	1200	1600	3800	4100	3700			600	800	1000	1200	---	11.0
12.0		1500	3300	3400	3300			400	600	700	1000	---	12.0
13.0		1300	2900	3000	2900			---	300	500	800	---	13.0
14.0		1200	1600	2600	2600			---	---	400	700	---	14.0
15.0		1200	1500	2300	2300			---	---	---	600	---	15.0
16.0			1400	2100	2000			---	---	---	500	---	16.0
16.5			1300	2000	1900			---	---	---	400	---	16.5
17.0			1300	2000	1800			---	---	---	400	---	17.0
18.0			1200	1900	1600			---	---	---	---	---	18.0
19.0			1200	1700	1400			---	---	---	---	---	19.0
19.5				1600	1300			---	---	---	---	---	19.5
21.0				1400	1300			---	---	---	---	---	21.0
22.0					1200			---	---	---	---	---	22.0
23.0								---	---	---	---	---	23.0
24.0								---	---	---	---	---	24.0
25.6								---	---	---	---	---	25.6
BOOM EXT. OFFSET ANGLE	6.1 m BOOM EXTENSION STRUCTURAL CAPACITIES												
	MAIN BOOM ANGLE												
	0°	15°	30°	40°	50°	60°	70°	75°					
0°	1200	1200	1300	1500	1800	2300	2800	3100					
15°	---	1100	1200	1200	1300	1500	1900	2200					
30°	---	---	1000	1100	1100	1200	1400	1500					

CAPACITIES ON OUTRIGGERS OUT AND DOWN ARE 85% OF TIPPING LOADS. CAPACITIES ON IN AND DOWN OUTRIGGERS ARE LESS THAN 85% OF TIPPING LOADS. CAPACITIES ON RUBBER ARE 75% OF TIPPING LOADS. CAPACITIES BELOW BOLD LINE ARE LIMITED BY TIPPING. OTHER CAPACITIES ARE LIMITED BY STRUCTURAL OR HYDRAULIC CAPABILITY.

DO NOT LIFT LOADS ON BOOM EXTENSION WHEN ON RUBBER OR OVER SIDE ON IN AND DOWN OUTRIGGERS.

CAUTION: BOOM EXTENSION LOADS MUST NOT EXCEED MAIN BOOM CAPACITY. LOAD RADII BELOW DOUBLE LINES REQUIRE BOOM EXTENSION. DO NOT POSITION BOOM AT LOAD RADII WHERE "—" CAPACITIES ARE SHOWN. EXCEEDING CAPACITY RATINGS OR APPLYING SIDE LOADS TO THE BOOM OR BOOM EXTENSION IS MISUSE, HAZARDOUS, AND VOIDS WARRANTY.